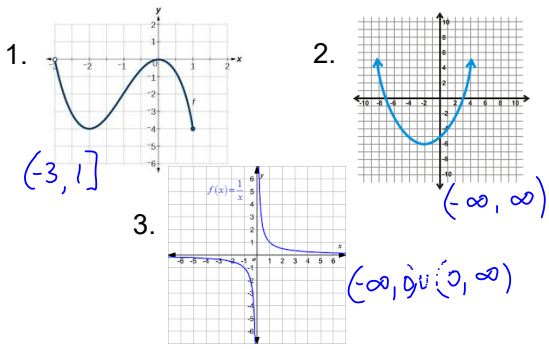


State the Domain of each graph.

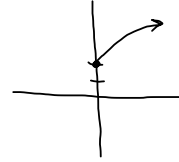


9.2 Transformations

Describe the transformation and graph the function.

$$y = \sqrt{x} + 2$$

up 2



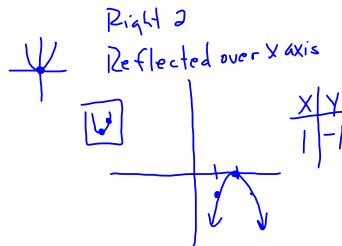
Describe the transformation.

$$y = 2(x-3)^2 + 4$$

Right 3
Stretch by a factor of 2
up 4

Describe the transformation and graph the function.

$$h(x) = -(x-2)^2$$



Find the function of $y = \sqrt{x}$
that has been

- (1) Reflected over x-axis
- (2) Shifted up 6
- (3) Shifted right 7

$$y = -\sqrt{x-7} + 6$$